

## MASTER LIST 2013

### Décor & Collectables...

Early 20th century Japanese Kimona w/ silk cord. Donated by Sarah Kendall.





**Blue Kimona from the 1990. Donated by Sarah Kendall.**





**Art glass & metal ink well & pen holder. Early 20th century. Donated by Sarah Kendall.**



**Binoculars-contemporary. Donated by Sarah Kendall.**



**Hand painted Herend Ducks from Hungary. Donated by Sarah Kendall.**



**Royal Copenhagen Penguin. Donated by Sarah Kendall.**



**French La Pintade Quail. (3) Donated by Judith Vance**



**Cut glass inkwell. Donated by Sarah Kendall.**



**Inuit Seal (signed 1970's) donated by Sarah Kendall.**



**Original Wooden Game Table. Created and donated by Linn Perkins.**





**Miniature Pool Table. Donated by Linn and Nancy Perkins.**



**Antique Tin Cars. Donated by Linn and Nancy Perkins.**



**Antique Wooden Highchair. Donated by Deb Rogers.**



**Clear & Red Swirled Glass Perfume Atomizer. Donated by Judith Vance.**



**Small Mexican Silver Box. Donated by Bettina Peabody.**



**Gold Plated Flatware, service for 10. Donated by Evelyn Schmidt.**



**Boxed Bar Set, six pieces.**



**Kneeling Elephants (2). Donated**

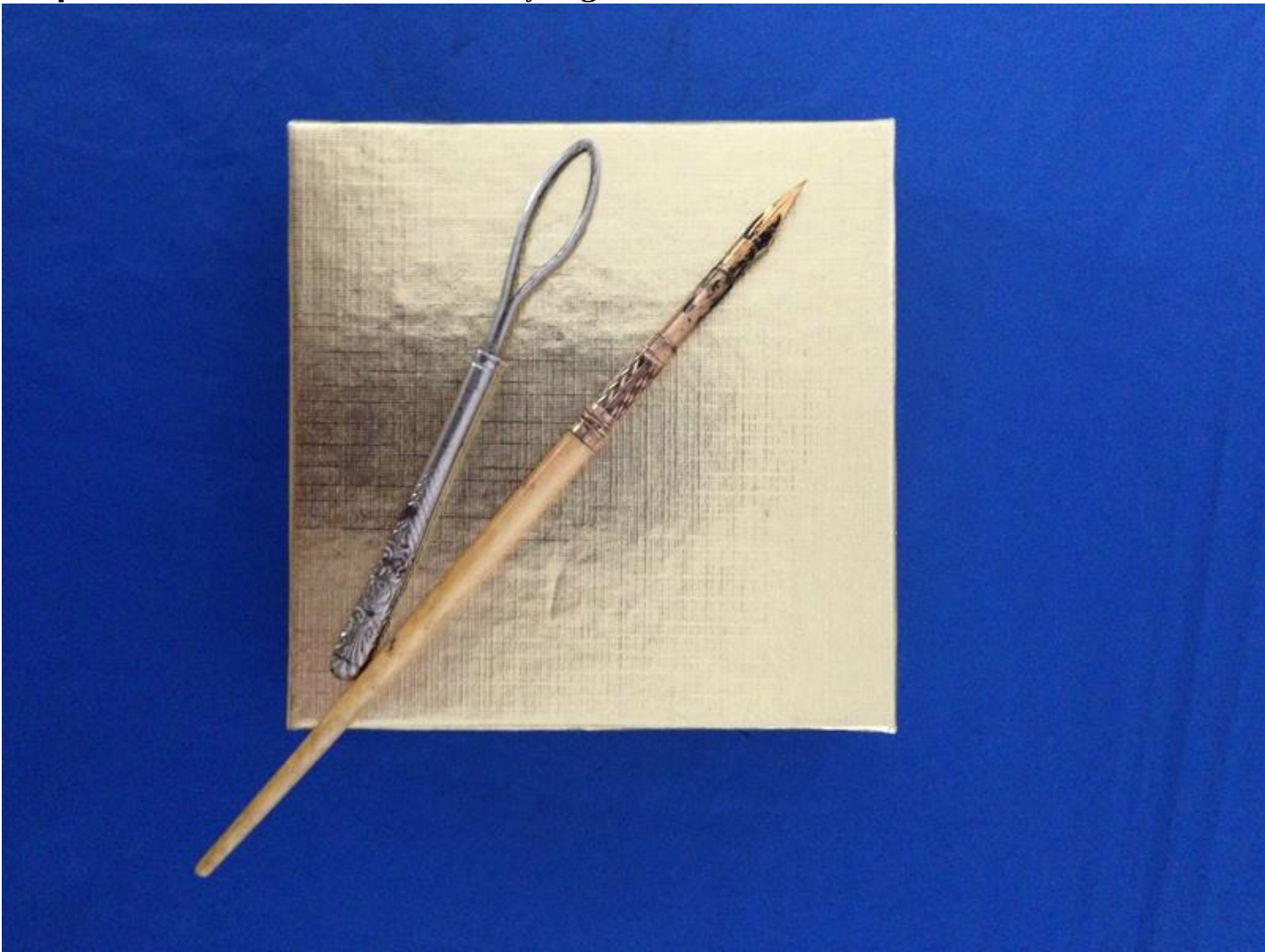




17" Laptop Sleeve by Vera Bradley. (



**Antique Pen & Button Fastener. Donated by Virginia Peterson.**



**Lead Crystal Decanter with 4 Glasses. Donated by Betsy**



**Smith**



**Green Wine Glasses. (12) Donated by Bettina Peabody.**



## **Jewelry**

**Hand Crafted Prayer Beads (2) Healing Beaded Necklaces (2). Created and donated by Padma Pali.**

Quartz: Master healing  
Garnet: Release inner fire  
Amethyst: Addiction  
Blue Aventurine: Healing power of the earth  
Fancy Jasper: Healing, well-being  
Unakite: Balance emotions, protection, release feelings  
Jade (Seagreen): Gentle steady healing energy  
Moonstone: Crown Chakra, understanding oneself  
Shell: Insight

*By Radma*

Amazonite: Spiritual faith, compassion  
Fancy Jasper: Healing, well-being  
Agate: Protective and healing energy  
Serpentine Jasper: Positive energy  
Jade (Seagreen): Gentle steady healing energy  
Turquoise: Cleansing, spiritual healing  
Flower Stone: Courage  
Quartzite: Channeling life force

*By Radma*

**Gray Freshwater Pearls. Donated by Bettina Peabody.**



**White Freshwater Pearls. Donated by Bettina Peabody.**





**Silpada Designs Hammered Silver Necklace & Earrings. Donated by Libby Collins.**



**Amethyst Ring set in Sterling. Donated by Bev Kemp.**



**Mexican Silver Pinched Earrings. Donated by Bettina Peabody.  
Mexican Silver Scalloped Earrings. Donated by Bettina Peabody.**

**Copper & Redline Marble Necklace & Earrings. Donated by Sunflowers & Dragonflies Handmade Unique Jewelry.**



## **Services**

**Brunch/Lunch for 8. Served at our home on a mutually agreed upon date and time. Donated by Pam & Alan Everson.**

**Dinner for 7 @ Rivermead's Seasons Restaurant. Donated and hosted by Dorothy Peterson.**

**Family Environmental Portrait Session. Donated by Marilyn Weir Photography. Value \$180.**

**Reiki Session. Value: \$60. One-hour hands-on energy healing session. Donated by Marilyn Weir. Value \$60.**

**Piano Tuning Have your piano professionally tuned by Arthur Eldrege Value \$80**

**A one-hour or two separate half-hours for dog walking or running. Donated by Jenn McLaughlin. Value \$20.**

## **Art & Craft**

**"The New Hampshire Muse" Framed Wood Engraving edition # 19/500. Created by Beth Krommes. Beth is our own Caldecott medal winner. Donated by the artist. Value \$150**



**Framed Oil Paintings: by Linda Lapham (3). Donated by the artist.**  
**1. "Near Lands End Cornwall"**



**2. "Windy Haven Northumberland"**



**3. "Kynance Cove Cornwall"**



**"Violets" French Watercolor, Paris 1987. Donated by Sarah Kendall.**



**“Winter Monadnock” Pastel by Sienna Merrifield Griffin. Donated by Sarah Kendall.**



**“Sumi-e Simple Elegance” by Ray Bliss Rich. Donated**



by

**"Lighthouse Sampler" 346/1000 by Sandra Peterson. Donated by**





**Matted Watercolor Paintings (2) by Virginia Peterson. Donated by the Artist.**

**1. "Hummer"**

**2. "Reggi"**





**Packages of 6 Note Cards featuring watercolor prints of Virginia Peterson's paintings.**



**Hand quilted Stylized American flag wallhanging, aprox. 38"x38". Created and donated by Gail Wilson. Value \$100.**



**Hand knit cashmere-merino-nylon baby sweater size 9 months. Machine washable, dry flat. Crafted and donated by Chris Howe.**



**Handmade mittens, 100% Harrisville Shetland, wool. Crafted and donated by Deb DeCicco. Value \$50.**



**Pair of alpaca Norwegian snowflake Handknit mittens. Crafted and donated by Nancy Drogy**



**Kenyan basket. Donated by Sarah Kendall.**



**Kikoi Wrap Nairobi -2008. Donated by Sarah Kendall.**



**Amish Quilt. Donated by Sarah Kendall.**



**Quilt Rack. Donated by Sarah Kendall.**

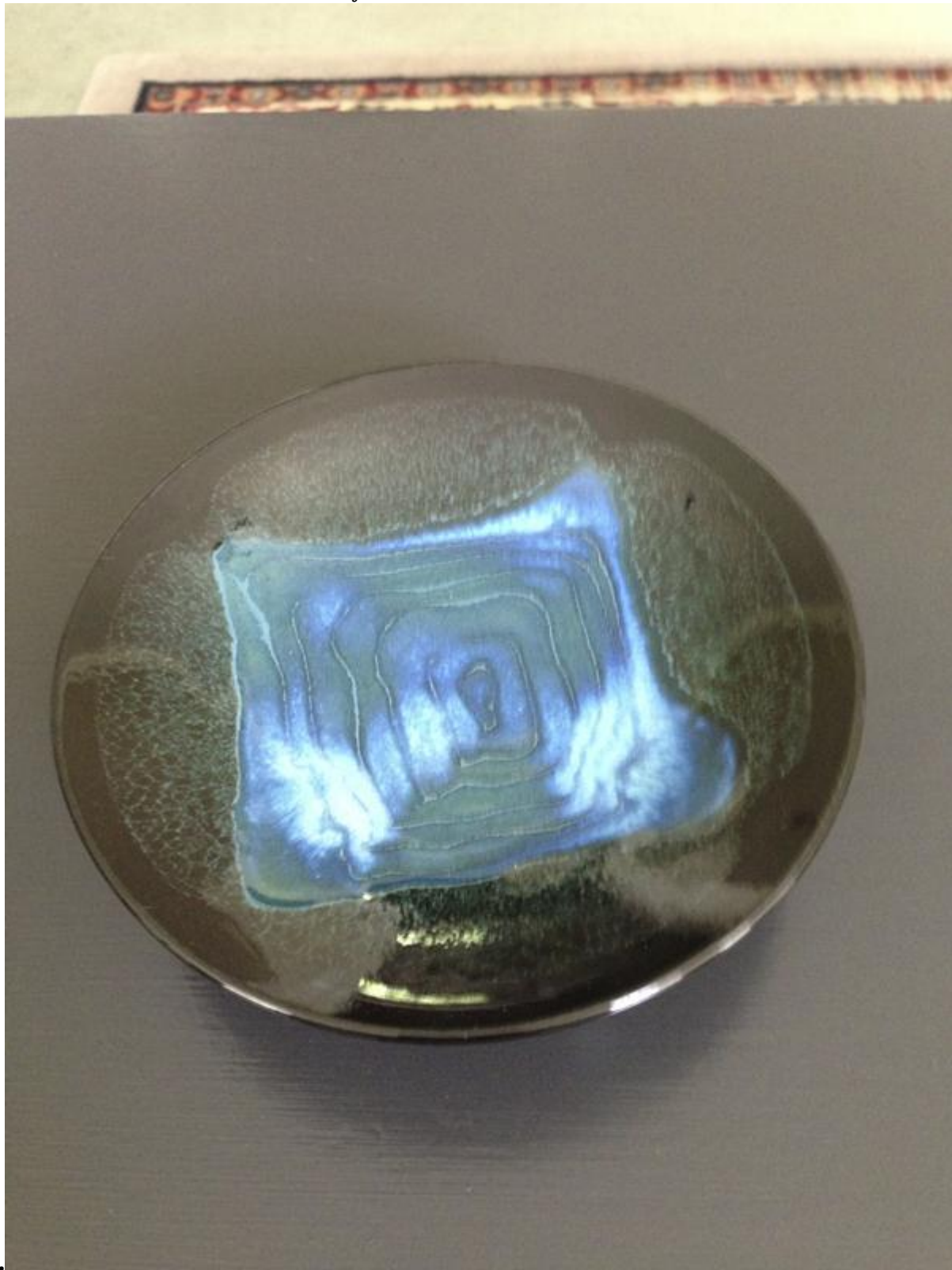


**White Mohair Throw with woven pastel fibers. Donated by Nancy**



**Drogy  
Felted Wallhanging with Beaded Fabric Scraps 18 x 18. Donated by Nancy Drogy.**

**Small Blue Ceramic Bowl. Donated by Liz**



**Tong.**  
**Ashford Spinning Wheel, made in New Zealand (New). Donated by Don Brezinski**





**“Faith” Wall Plaque. Donated by At Wits End**



**“Early October” Silkscreen by Colette Lucas of Peterborough. Edition 15/25.**



15/00

Early Rabbit  
1960s

**Floral Sarong from Bali. Donated by Joseph's Coat.**



### **Entertainment/Lodging**

**Ride on 1901 Lane Steamer Experience automobile travel as it was 100 years ago. Donated by owner & driver Arthur Eldrege Value \$75.**

### **Food & Beverages**

**Montana Mom's Dynamite Cheesecake Serves 8-10 Made to order and donated by Diane Callahan**

**Lemon Tea Breads (2). Baked & donated by Corey Field @ Mustard Seed Bakery.**

**Two dozen Mini Cannolis. Donated by Gloria Schultz @ Tessie's Cucina.**

**Madeleines and Chocolate Sauce. (6) packages Donated by C'est le Vie**

### **Other**

**\$20.00 Gift Certificate. Donated by Anytime Apparel.**



**20% off rug purchase @ Tribals & 20% off half day of Art Camp. Donated by Tribals Rugs by Hand.  
\$30 Gift Certificate. Donated by Hobbs Jewelers.**





**\$25 Gift Certificate to "Underneath it All"**



*Underneath  
It All*

*Lingerie Loungewear Yoga Apparel*

A Gift Certificate



From

*Morgan's Way*

for \$ 50.00

New Fashion Classics & Gifts

Silent Auction

28 Main Street • Peterborough, NH 03458

603-924-6255

for The All Saints Summer Fair

**\$25.00 toward the purchase of a mona adisa brooks sculpture. Donated by mona adisa brooks, professional artist & owner of Trumpet Fine Arts Gallery**



**Avian Aquatics Recirculating Dripper. Anonymous**



**Donor.**

**\$25. Gift Certificate. Donated by Ron & Bette Ann @ The Other Ark  
Brass Oil Lamps & Oil (2). Donated by Betsy Smith**















DODGE FARM ANTIQUES  
Opening April 2013  
7 School Street, Peterborough, NH  
DodgeFarmAntiques.com 603.784.5...

Dodge Farm Antiques  
Go GREEN- BUY Antiques!  
DodgeFarmAntiques.com  
917-922-3910

*Pre-Columbian Clay Vessel*